

THE **ESTHER M. KLEIN** ART GALLERY

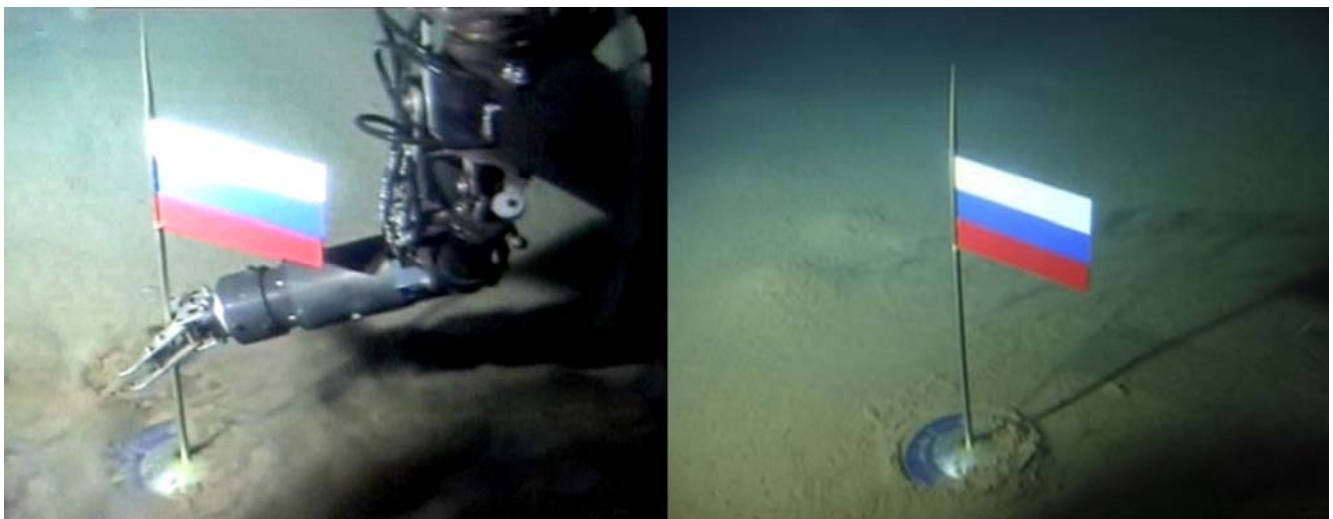
ART & COMMUNITY AT THE SCIENCE CENTER

AUGUST 12, 2008

FOR IMMEDIATE RELEASE

CONTACT: Dan Schimmel or David Clayton at 215.966.6188, kleinart@sciencecenter.org

THE INTERVAL SEPARATING



EXHIBITION DATES:

SEPTEMBER 12 – NOVEMBER 1, 2008

OPENING RECEPTION:

FRIDAY, SEPTEMBER 12TH, FROM 5:00PM TO 8:00PM

The Interval Separating features work by artist, Caleb Larsen. The exhibition utilizes logic-based systems to explore the intersection and divide between digital and physical space.

Larsen approaches this topic obliquely through employment of installation, print, electronics, sculpture and multimedia. His work leverages the effects of language and mapping to translate life, media, and culture into *transmedia* experience. It is through distortion, reduction, and manipulation that Larsen is able to navigate this space. The diversity, interest and research reflected in his artwork seemingly make Larsen, as much engineer, geographer, or anthropologist as he is an artist.

"The wild toolbox of Caleb Larsen's activities reveals a spirit much like that of an explorer looking for the unknown. ... By extracting information from found sources, whether art, movies, or the web, Larsen is clueing us in to other things we should be noticing and be ready for." –Ian Berry



Larsen's recent work has been exhibited at the Peacock Visual Arts in Scotland, Los Angeles Center for Digital Art, Detroit International Video Festival, Flux Factory in New York, 911 Media Arts Center in Seattle, and Tjaden Gallery at Cornell University. The artist lives and works in Seattle and Rhode Island.

For more information, please visit: <http://caleblarsen.com>

Image notes:

Land Grab
Caleb Larsen, 2008
Digital Print diptych

Monument (detail)
Date: 2006
Data driven installation, 100,000 bbs, electronics, news data

- # # # -

The Esther M. Klein Art Gallery at the Science Center is a nonprofit exhibition venue that explores the intersection between art, science, and technology. The Esther M. Klein Art Gallery is located at 3600 Market Street. The gallery is opened Monday through Saturday from 9am to 5pm. For more information and exhibit updates, visit www.kleinartgallery.org